

A PERFECT VIEW

*This oasis of a home celebrates the stunning sea vista that surrounds it, so much so that the architect **Carlo Calma** elected to frame it via windows and open spaces, writes **MJ Jose***

Photography **WIG TYSMANS**
Assisted by **TONETTE JACINTO**

BY NIGHTFALL
Dubbed by its architect as the 'Frame House,' this Punta Fuego home is all about picture-perfect views





Perched atop a cliff that offers a stunning view of Fortune Island, this Punta Fuego home is a haven for the sea-loving couple who live in it. Three years in the making, design plans were revised twice by architect Carlo Calma, who was commissioned to work on the structure. Firm in the belief that each home is a constant dialogue between the architect and the owner, he says, “We as architects need to understand how they live and

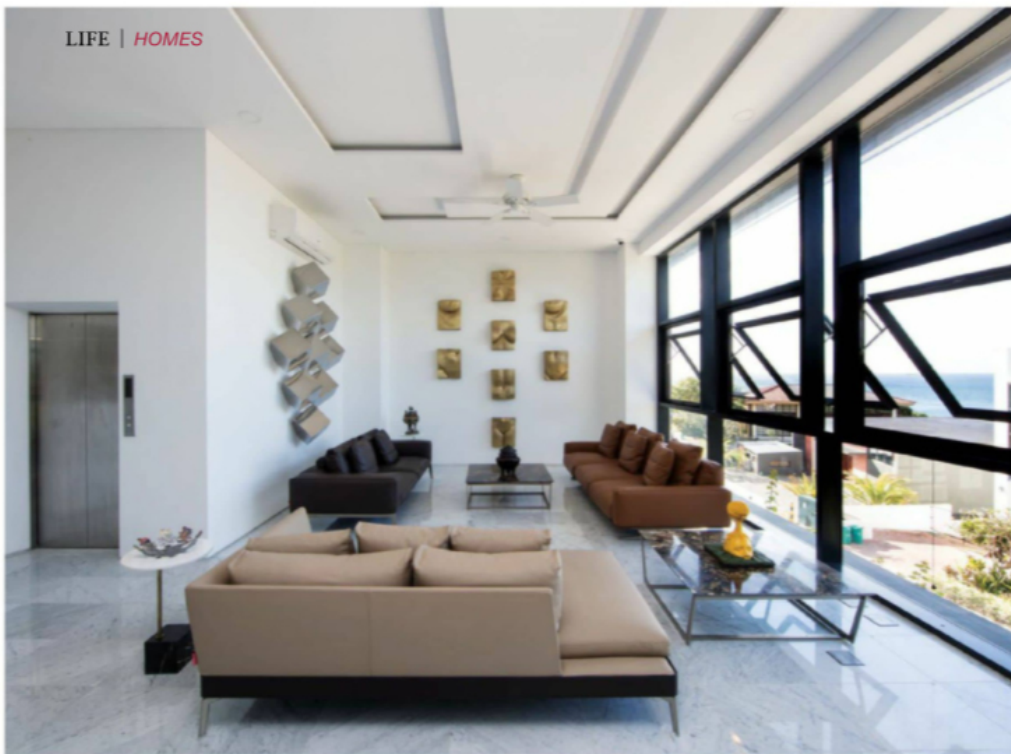
how they want to use these spaces. We are responsible for designing stylish, comfortable, and functional homes, but with a ‘wow’ factor—there is always a need to bring new ideas to the table.” But on occasion, avant-garde ideas turn out to be non-compliant with building restrictions and regulations, and Calma sent himself back to the drawing board. He adds, “To be honest, I’m not fond of having to stick to themes, but I was committed to unifying my vision with that of the owners and making it work within the given parameters. Despite having to change the direction

BRIGHT AND AIRY

Building a home atop a cliff was a challenge Carlo Calma enjoyed; A concrete staircase leads up to the house; (inset) Furniture from Flexform and art pieces by Gabby Barredo populate the structure



**A CONCRETE
MASTERPIECE**
*Clean, modern, and
edgy, this home is a
hallmark of Calma's
design aesthetic.*



MODERN LIVING
 (From top) Wide windows and high ceilings allow for natural ventilation; A piece by Gabby Barredo on display in the living area

of the design, the end result ended up being a perfect fit for this unconventional terrain.”

Given the location of the lot, it was an utmost necessity to build using materials that could withstand both harsh weather and salt water. Concrete, due to its durability, was chosen as the main material. Calma also thought to use the existing flora as well as the rocks collected from the digging to supplement the landscape (“It’s a house that cooperates with nature.”).

To pay homage to the picture-perfect vistas that surround the lot, the priority was to construct the house in such a way that each area—by way of open spaces and windows—would be orientated towards the best possible view. This framing is carefully executed, each one highly intentional.

“For the exterior, the design seems static and closed-off—and it is, because the clients wished to have a sense of privacy,” Calma explains. “The first design element one sees upon entering is a concrete staircase structure, which was inspired by an uphill climb due to the shape of the lot. Once you enter the house, what greets you is a

view of the open sea, which is surprising because you wouldn’t expect to see that from the outside.”

The open-plan ground floor, designed with high ceilings to allow for natural ventilation (a massive ceiling fan assists in circulating air and exit ducts allow hot air to escape), houses the living, dining, and kitchen areas. The interiors are done using concrete, glass, and Calcutta marble from Italy, complemented with sleek, modern furniture from the brand Flexform. The stone kitchen is a custom fit, with the couple even flying in an Italian installer to get the job done. The dining table, designed to sit a good number of guests, is made of a massive slab of natural wood. Kinetic art pieces by Gabby Barredo, a favourite of the gentleman of the house, are placed in various areas, adding a touch of fluidity to the otherwise static skeleton.

One of the house’s most outstanding features is the spacious deck—again, perfectly framed from the living room access point—overlooking the water. This communal space, perfect for hosting barbecues and simply lounging about, is where the owners elect to entertain friends.



A WATER LOVER’S HAVEN
 (From top) The living area looks out onto the sea; Works by an Israeli artist



LAND AND SEA

(From top) The beautiful sea vista is visible from many parts of the home; Calma made use of rocks collected from the digging as part of the landscaping; (opposite) The setting sun is perfectly captured through this piece by an Israeli artist

A highlight is the cantilevered infinity pool, positioned in such a way that it seems to jut out towards the sea, blurring the lines between what is man-made and what is natural.

Calma carries over his deliberate framing to the second floor, where he has the master bedroom tilted in such a way that it allows the couple to wake up to the same beautiful view. And it is this tranquility that draws its owners, who are happy to spend more time here despite it being ways away from the metro. The man of the house, whose business does not require him to spend hours in an office, is fond of working from this oasis. The lady of the house, a staunch supporter of the performing arts (she is affiliated with Ballet Philippines), loves that the home is like a theatre where their collection of kinetic sculptures come to life like dancers once the sea breeze flows in. 🌊