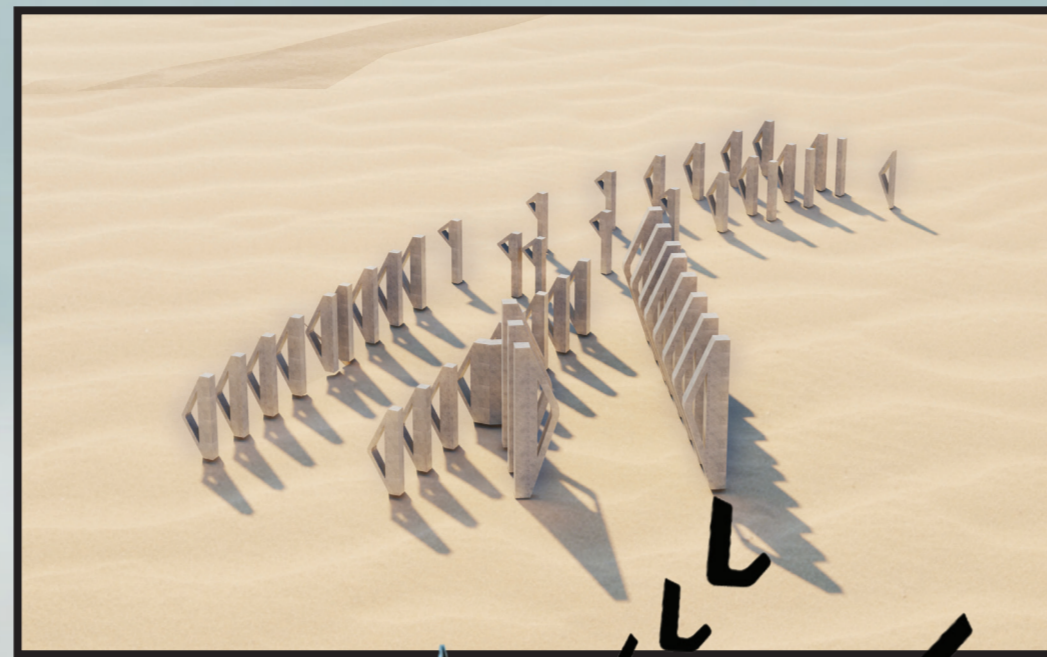


# VINTA SAILSCAPES

The concept of this 101-room hotel is all about the views of the sea, protecting the habitat of flora and fauna since Palawan is among the biological diverse areas in South East Asia and creating this new way of leisure-led development by creating these cultural tapestries of resort typologies. As you enter this grand ramp entrance, you see wonderful views of the ocean in the main lobby and preserving coconut and trees around it. Phase 1 of the building is made up of three interconnected blocks that is stacked forming this boomerang shaped plan. This boomerang shaped plan was carefully formed by considering the existing trees in the area so there is very minimal environmental impact and the height of the building just sits like a pillow in a sea of coconuts. The rooms were oriented to get good vantage points of this long stretch 15km of beach. The second-floor infinity pool which is the executive floor was placed to bask in the sun and to create a dramatic guest experience. The building design was inspired by "vintas" - it is a traditional vernacular boat from the Philippine island of Mindanao. Originally it has a sail of assorted vertical colors that represents the colorful culture and history of the region but what we created was our own abstract representation. Those structural portals made of concrete are shaped like "vinta" that follow a certain air path and create unique natural air ventilation and also sun buffer. These vinta structural columns are monumental and lighted at night - and some functions as well as daybeds, seating, bar area also areas of play. With these different gradience of vinta type of pilotis - it creates lots of area for lounging, playing, and creates an interface of air, light and flow. The materiality of the concrete is sanded down, adding local aggregate and waterproof sealer so the building has that tactile quality as if it was part of nature and becomes a sort of artefact. The building blurs the boundary between nature and artefact, and it becomes a space that goes within the natural fabric of the site. Phase 2 is the Clustered Undulating Sailwaves which are sectional villas that has a ramp roof so you have private area for sunsets and Phase 3 of the project is encapsulating the existing mangroves and making the community part of the construction process of the building by using local materials such as Buri plant - anthropological weaving patterns from the region will be used which celebrates local climate and ethnography.



VINTA BOAT ORIGIN OF THE "PARADE OF SAIL BOATS" COLONADE AND ITS RELATIONSHIP TO PREVAILING WINDS

30 METERS FROM HIGH WATER MARK

50 METERS FROM HIGH WATER MARK

170 METERS FROM HIGH WATER MARK

185 METERS FROM HIGH WATER MARK

GREEN ROOF

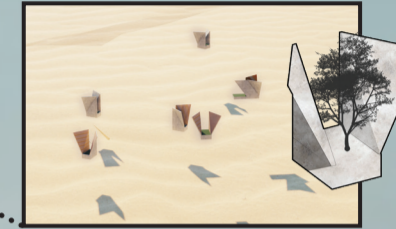
AMIHAN (NORTHEAST MONSOON) > COOL AND DRY WIND

INFINITY POOL

LOBBY

ELEVATOR/ VERTICAL CIRCULATION

SAIL WINGS FOR VENTILATION WITH TREE PLANTBOXES



DE LUXE ROOM. (DOUBLE)

DE LUXE ROOM. (KING)

FAMILY ROOM

STANDARD ROOM (TWIN)

STANDARD ROOM (KING)

RESTAURANT

SERVICES/ UTILITIES/ CIRCULATION

MAIN RAMP

SAND POCKETS

HABAGAT (SOUTHWEST MONSOON) > HOT AND HUMID WIND

VINTA SAILSCAPES > PROGRAMMATIC DIAGRAM



VINTA SAILSCAPES > PERSPECTIVE



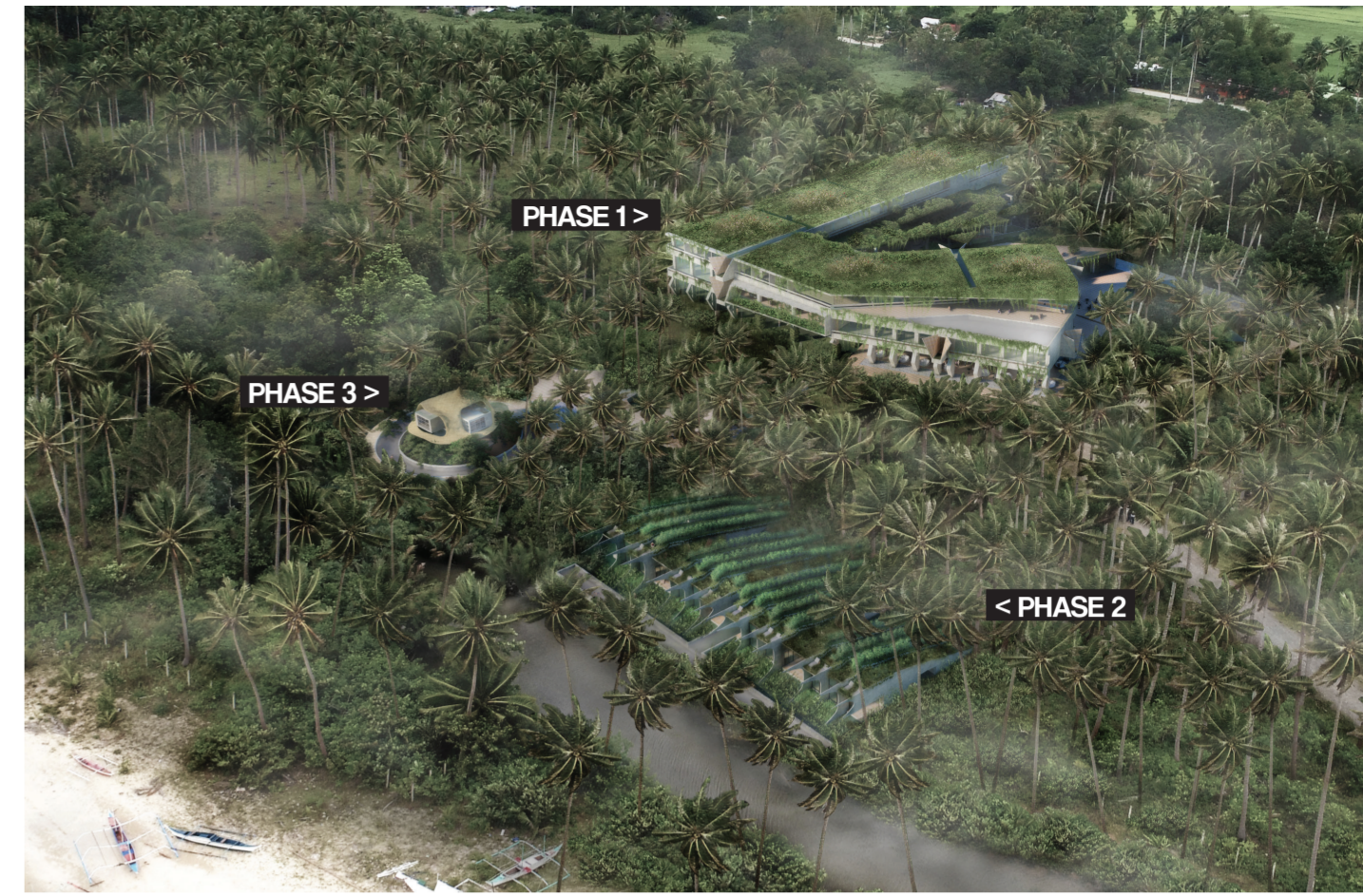
PHASE 1 > VINTA SAILSCAPES



PHASE 2 > CLUSTERED UNDULATING SAILWAVES



PHASE 3 > SALAKOT MEMOIR VILLA ENCAPSULATING EXISTING MANGROVES



PHASE 1 >

PHASE 3 >

< PHASE 2

SITE AERIAL PERSPECTIVE

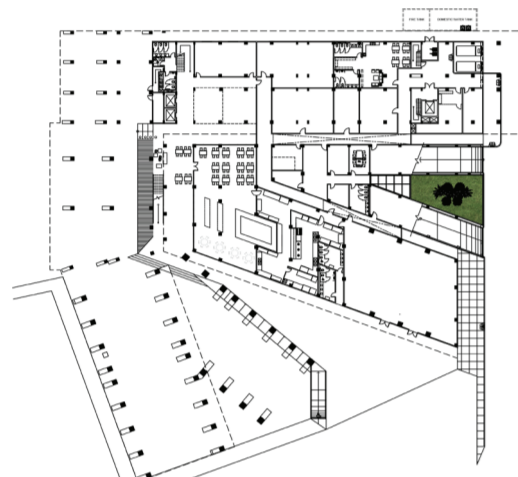


VINTA SAILSCAPES > FRONT ELEVATION

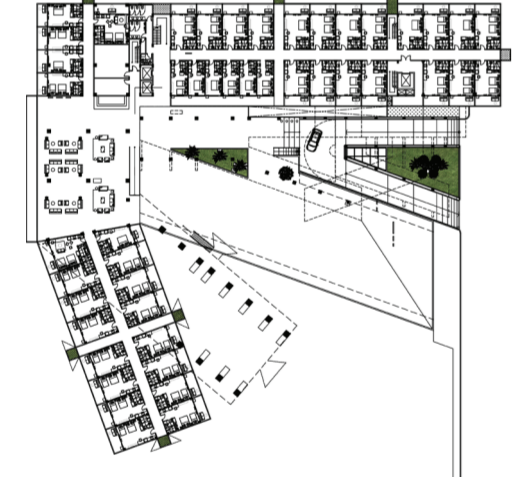


BURI PLANT > THE ARTISAN WEAVERS

BANIG WEAVE INSPIRED BY SALAKOT (A LOCAL HAT TO PROTECT FROM SUN & RAIN)



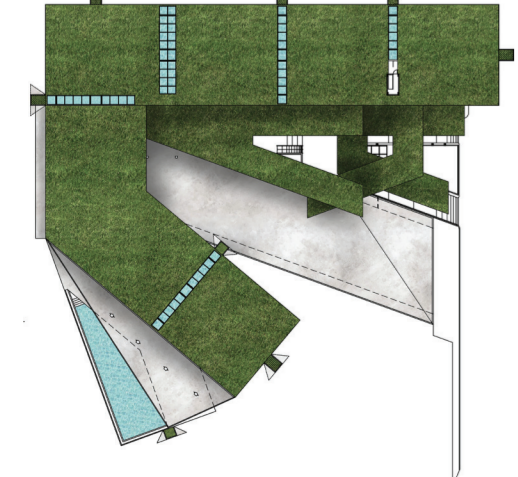
GROUND FLOOR PLAN



SECOND FLOOR PLAN



THIRD FLOOR PLAN



ROOF DECK PLAN



VINTA SAILSCAPES > FACADE PERSPECTIVE